

**DDDDK Antibody [1D1B12] (biotin)**  
**Catalog # ASC12045****Specification****DDDDK Antibody [1D1B12] (biotin) - Product Information**

Application	WB, E
Primary Accession	<a href="#">P60709</a>
Other Accession	<a href="#">60</a>
Host	Mouse
Clonality	Monoclonal
Isotype	IgG
Calculated MW	41737
Application Notes	Biotin-DDDDK antibody can be used for detection of DDDDK by Western blot at 0.5 - 1 µ/ml.

**DDDDK Antibody [1D1B12] (biotin) - Additional Information**

Gene ID 60

**Other Names**

Biotin-DDDDK, DDDDK, FLAG, FLAGtag, flag-tag

**Precautions**

DDDDK Antibody [1D1B12] (biotin) is for research use only and not for use in diagnostic or therapeutic procedures.

**DDDDK Antibody [1D1B12] (biotin) - Protein Information****Name** ACTB**Function**

Actin is a highly conserved protein that polymerizes to produce filaments that form cross-linked networks in the cytoplasm of cells (PubMed: [25255767](http://www.uniprot.org/citations/25255767), PubMed: [29581253](http://www.uniprot.org/citations/29581253)). Actin exists in both monomeric (G-actin) and polymeric (F-actin) forms, both forms playing key functions, such as cell motility and contraction (PubMed: [29581253](http://www.uniprot.org/citations/29581253)). In addition to their role in the cytoplasmic cytoskeleton, G- and F- actin also localize in the nucleus, and regulate gene transcription and motility and repair of damaged DNA (PubMed: [29925947](http://www.uniprot.org/citations/29925947)). Plays a role in the assembly of the gamma-tubulin ring complex (γTuRC), which regulates the minus-end nucleation of alpha-beta tubulin heterodimers that grow into microtubule protofilaments (PubMed: [39321809](http://www.uniprot.org/citations/39321809), PubMed: [38609661](http://www.uniprot.org/citations/38609661)). Part of the ACTR1A/ACTB filament around which the dynactin complex is built (By similarity). The dynactin multiprotein complex activates the molecular motor dynein for ultra-processive transport along microtubules (By similarity).

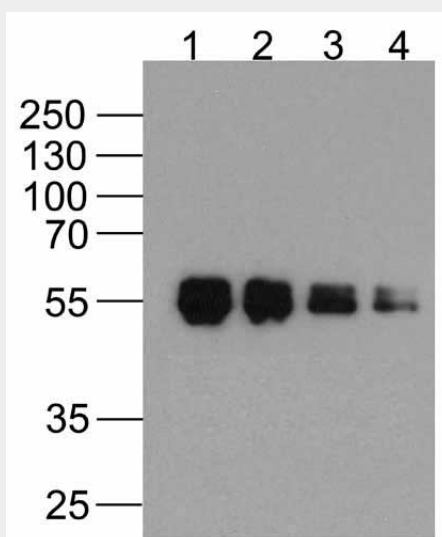
**Cellular Location**

Cytoplasm, cytoskeleton. Nucleus Note=Localized in cytoplasmic mRNP granules containing untranslated mRNAs.

**DDDDK Antibody [1D1B12] (biotin) - Protocols**

Provided below are standard protocols that you may find useful for product applications.

- [Western Blot](#)
- [Blocking Peptides](#)
- [Dot Blot](#)
- [Immunohistochemistry](#)
- [Immunofluorescence](#)
- [Immunoprecipitation](#)
- [Flow Cytometry](#)
- [Cell Culture](#)

**DDDDK Antibody [1D1B12] (biotin) - Images**

Western blot analysis of (1) 1000ng, (2) 500ng, (3) 250ng, and (4) 125ng of DDDDK-tagged recombinant protein (GGP1) with Biotin-DDDDK-tag antibody at 0.5 µg/ml.

**DDDDK Antibody [1D1B12] (biotin) - Background**

Epitope tags provide a method to localize gene products in a variety of cell types, study the topology of proteins and protein complexes, identify associated proteins, and characterize newly identified, low abundance or poorly immunogenic proteins when protein specific antibodies are not available. DDDDK-tag is one of the more popular epitope tags for expressed recombinant proteins.